

FF-AXFM 4½" x 5" Duplex Power Pump

Where hard work is still treasured
and quality is a matter of pride.

ISO 9001:2008
Registered





**ISO 9001:2008
Registered**



**American Mfg Company is
ISO 9001:2008 Certified.**

Perry Johnson Registrars, Inc., has assessed the quality management systems of American Mfg Company, Inc. and declared that the organization is in conformance with ISO 9001:2008 to manufacture OEM Mud Pumps and Replacement Parts for Mud Pumps, Centrifugal Pumps, Rig Parts and Swivel Parts for the Oil, Gas and Water Drilling Industry.

FF-AXFM Duplex Power Pump

The American Model FF-AXFM is a duplex reciprocating type power slush pump designed for maximizing volume without sacrifice of working pressure and compactness.

Its power end is a rugged, one-piece unit with integral supports for jackshaft and eccentric shaft bearings. The cover is removable for easy access to the power end components.

Connecting rods are one-piece cast alloy with renewable eccentric bushings and crosshead bushings. The one-piece skirt type cast alloy crosshead is reinforced at all load areas.

Fluid end of the FF-AXFM is a one piece casting with conventional pot type valves. Steel studs secure valve covers, flanges and plates to the fluid end, and fluid end to power end.

All bearings are sealed in individual pressure gun lubricated housings. Eccentrics, crossheads and pins are lubricated from the power end reservoir through normal movement of parts.

American lubricator type packing glands provide positive lubrication to piston rods. This pump is equipped with American pistons, hardened liners, rods and valves.

Standard Equipment

- 4½" GD-1 Pistons
- Liners and gravel valves
- Double-ended jackshaft
- Piston rods - GD-1 taper
- Lubricated Packing Glands

Specifications

Pump Weight: 1,495 lbs. (678 kg)

Dimensions

Length: 67.4"

Width: 30.1"

Height: 22.5"

Jackshaft Extension

Diameter: 1.94"

Length: 5"

Keyway: 4 3/8" L x 1/2" W x 1/2" H

Stroke Length: 5" (127 mm)

Liner Size

Minimum: 2½"

Maximum: 4½"

Fluid End Type: Cast Iron One Piece

No. of Pistons: 2

Piston Rod Load: 3,140 lbs. (1,424 kg)

Oil Capacity: 3 gal. (11.5 liters)

Maximum BHP

Mud Service: 16.2 (12 kw)

Ind'l. Service: 19.7 (15 kw)

Maximum Jackshaft RPM

Mud Service: 439

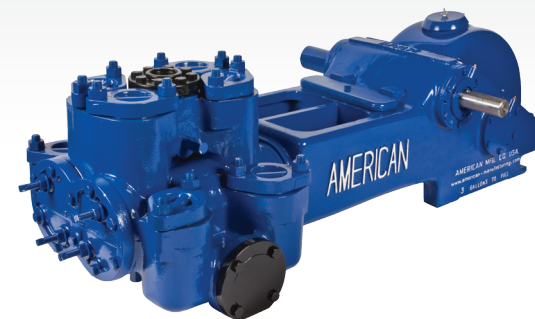
Ind'l. Service: 537

Suction Connection: 2½" NPT 125#

Discharge Connection: 2" NPT 300#

Note:

All installations must contain a pressure relief valve in the discharge line near the pump to help prevent breakage.



Performance Ratings

Based on 90% mechanical efficiency and 100% volumetric efficiency

AXFM Duplex Industrial Pump For Oil Line, Mining And Industrial Service

			Normal Operation						** Maximum Recommended Operation							
Model	Stroke	Liner Size Diameter		Displacement		Max Pump RPM	Jack-shaft RPM	Input HP at Max Speed	Displacement		Max Pump RPM	Jack-shaft RPM	Input HP at Max Speed	*** Maximum Working Pressure		Maximum Piston Load
		in.	mm	gpm	lpm				gpm	lpm				psi	kg/cm2	
AXFM	5" (127 mm)	4½	114.3	121	458	90	439	16.2	149	562	110	537	19.7	197	13	3,140 lbs (1,424 kg)
		4	101.6	94	357				115	435				250	17	
		3½	88.9	72	274				88	334				326	22	
		3	76.2	52	197				64	242				444	30	
		2½	63.5	35	135				43	164				639	44	

AXFM Duplex Mud Pump For Mud, Grout And Cement Service

				Normal / Maximum Recommended Operation							
Model	Stroke	Liner Size Diameter		Displacement		Max Pump RPM	Jack-shaft RPM	Input HP at Max Speed	*** Maximum Working Pressure		Maximum Piston Load
		in.	mm	gpm	lpm				psi	kg/cm2	
AXFM	5" (127 mm)	4½	114.3	121	458	90	439	16.2	197	13	3,140 lbs (1,424 kg)
		4	101.6	94	357				250	17	
		3½	88.9	72	274				326	22	
		3	76.2	52	198				444	30	
		2½	63.5	35	135				639	44	

** These speeds are recommended for favorable suction conditions and considerations must be given to viscosity and character of fluids.

*** Maximum working pressure shown applies to the fluids ends. Power ends are designed for certain maximum piston rod loads, and in service the power end determines the maximum pressure on a given size piston. Tabulated maximum pressure for any given size piston for maximum piston rod load must not be exceeded even at reduced RPM.

FF-AXFM Duplex Power Pump

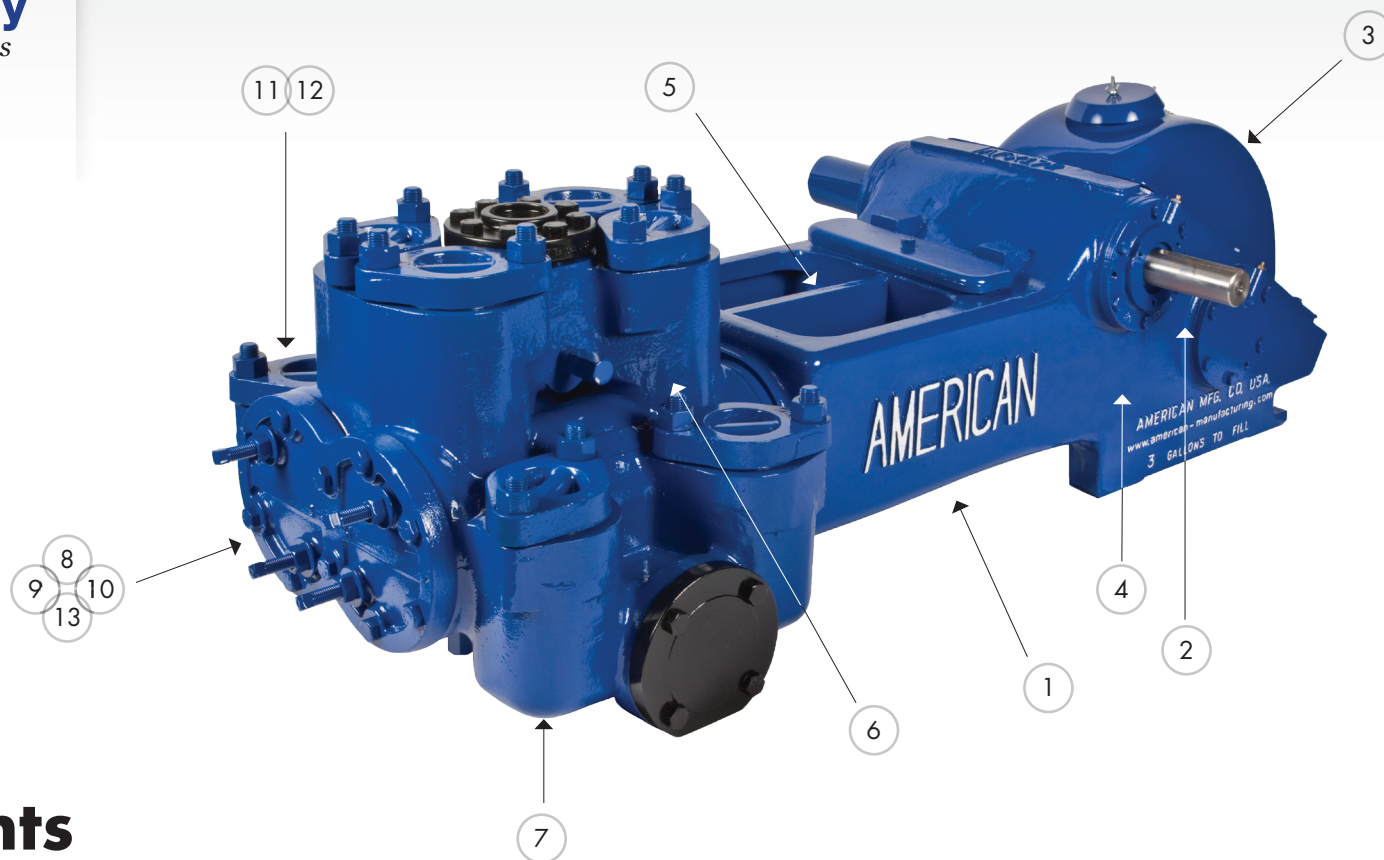
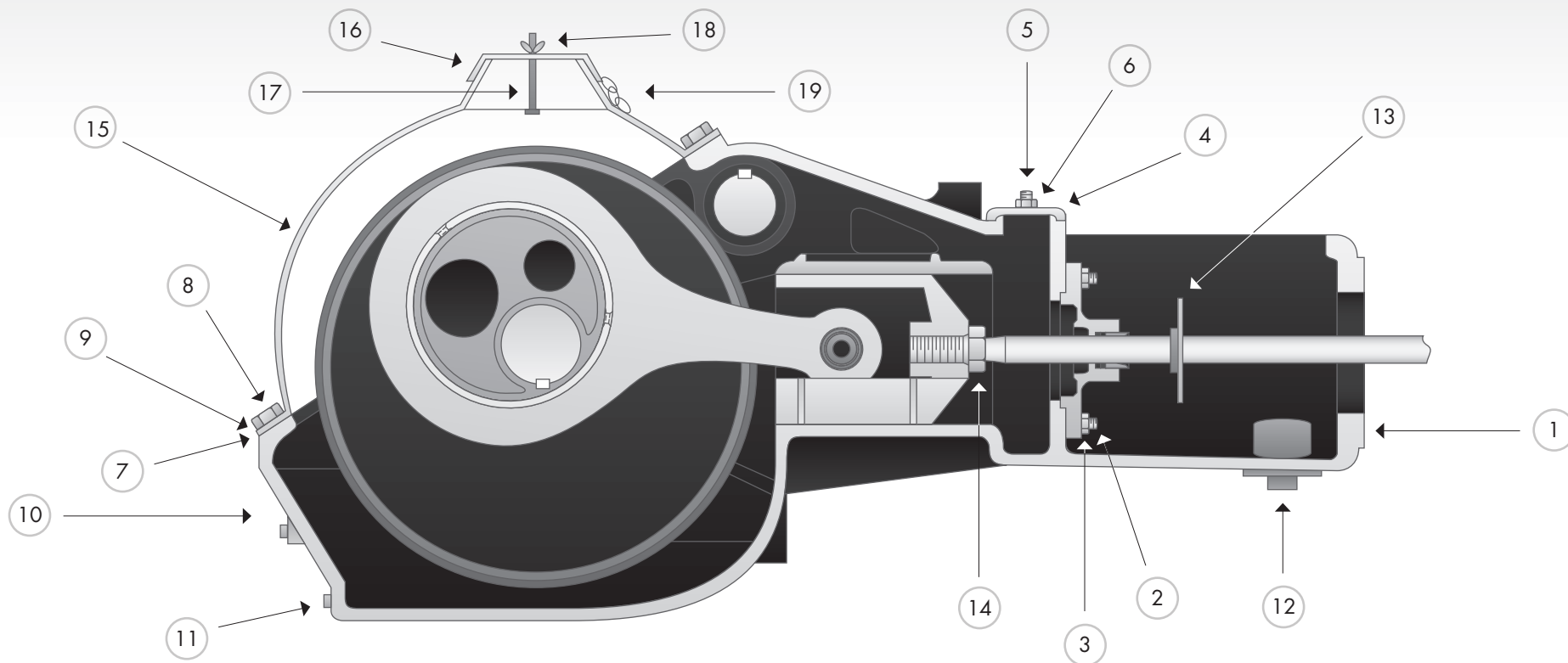


Table of Contents

Frame Groups	Pages
① Frame Assembly Group	5
② Jackshaft Assembly Group	6
③ Eccentric Assembly Group	7
④ Connecting Rod & Crosshead	8
⑤ Oil Stop Head	9
⑥ Stuffing Box	9

Fluid Cylinder Groups	Pages
⑦ Fluid Cylinder Group	10
⑧ Cylinder Liners	11
⑨ Piston Rod	11
⑩ Pistons	12
⑪ Valves	13,14,15
⑫ Valve Seat Pullers	16
⑬ Liner Puller	16



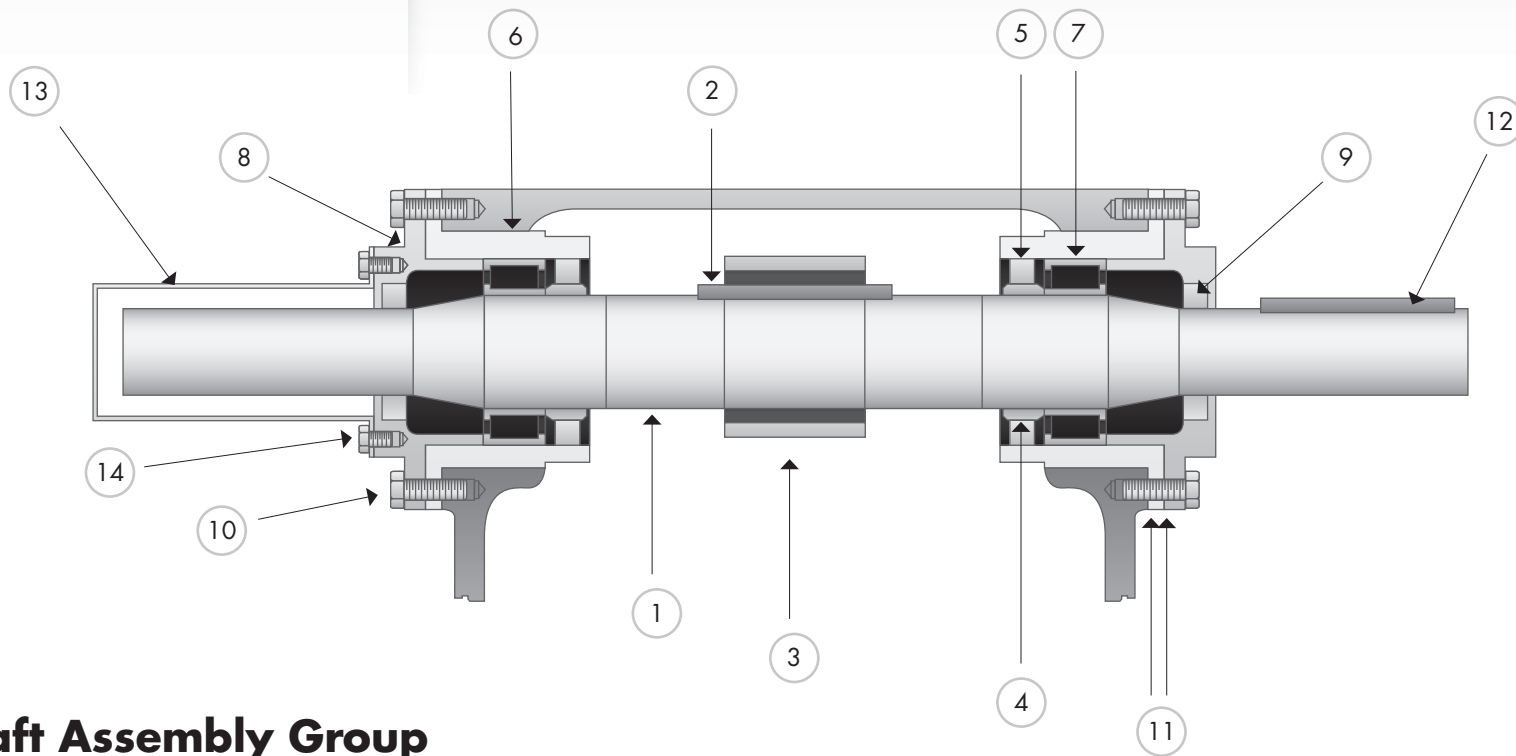
Frame Assembly Group

Ref. No.	Description	Quantity	Part Number
	FRAME ASSEMBLY Includes Ref. No. 1, 2, 3, 5, 6, 7, 10, 11, 12	1	PPGD 1AXF172A
1	FRAME	1	PPGD 1AXF172
2	STUD, Oil Stop Head	4	PPGD 79A69
3	NUT, Oil Stop Head	4	PPGD 50B5
4	PLATE-INSPECTION	1	PPGD 3AXG237-1
5	STUD, Inspection Plate	1	PPGD 79A338
6	NUT, Inspection Plate Stud	1	PPGD 50B3
7	GASKET, Hood	1	PPGD 2009457-T
8	SCREW, Hood	8	PPGD 75A130
9	WASHER	8	PPGD 75A130-1

Ref. No.	Description	Quantity	Part Number
10	PLUG, Oil Level	1	PPGD 64AA4
11	PLUG, Oil Drain	1	PPGD 64A5
12	PLUG, Frame Drain	1	PPGD 64A9
13	Baffle, Piston Rod	2	PPGD 2FXF840
14	NUT, CROSSHEAD	2	PPGD 50T73
15	HOOD Assembly Includes 16, 17, 18, 19	1	PPGD 200FXF053
16	HOOD CAP	1	PPGD 200FXF053-1
17	STUD, Hood Cap	1	PPGD 200FXF053-2
18	NUT, Hood Cap	1	PPGD 200FXF053-3
19	CHAIN, Hood Cap	1	PPGD 200FXF053-4

* Not shown

Please order by part number and description. Reference numbers are for your convenience only.

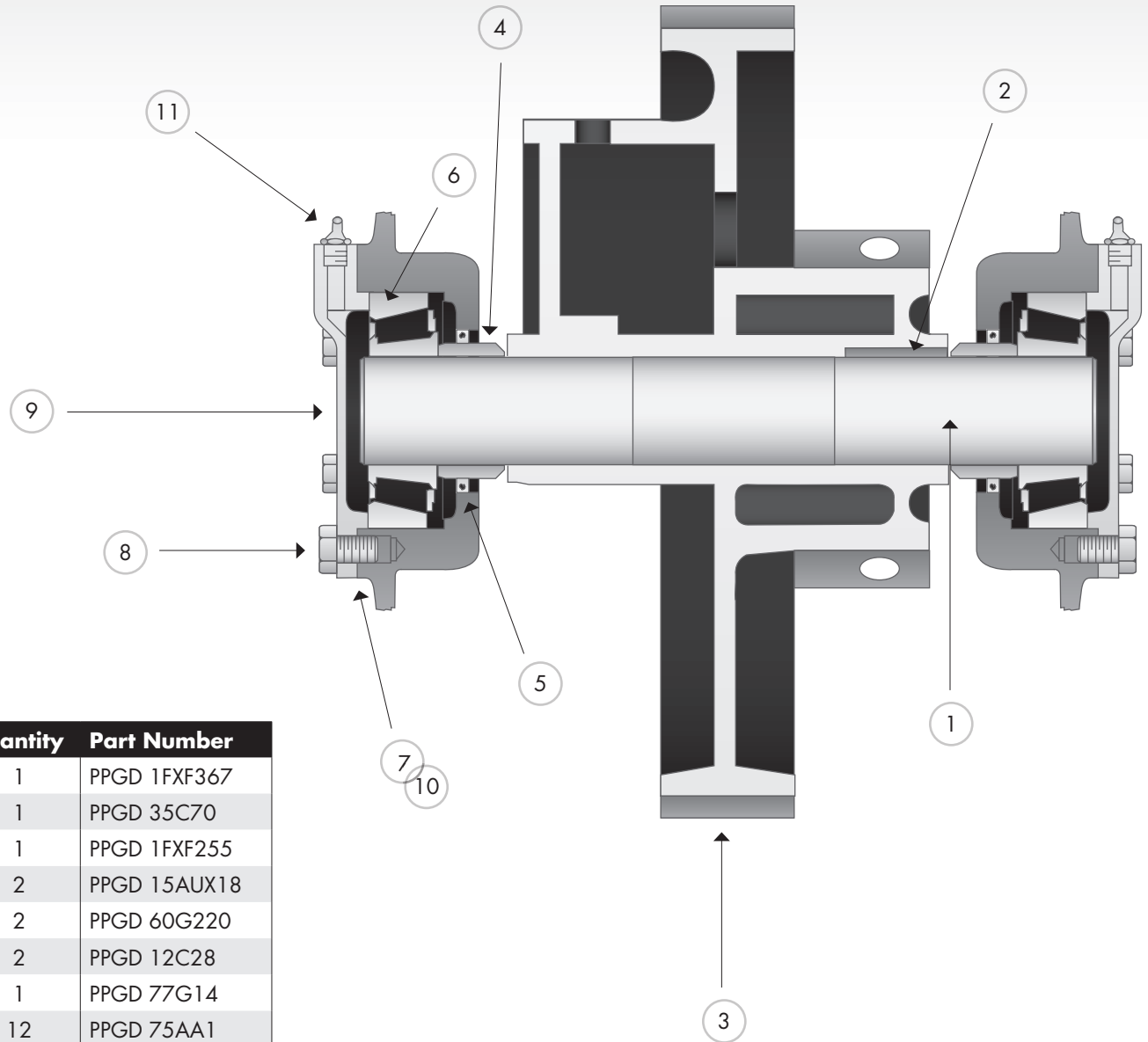


Jackshaft Assembly Group

Ref. No.	Description	Quantity	Part Number
	JACKSHAFT ASSEMBLY Includes Ref. No. 1, 2, 3	1	PPGD FXF374
1	JACKSHAFT	1	PPGD FXF371
2	KEY, Jackshaft to Gear	1	PPGD 35C46
3	GEAR-DRIVEN	1	PPGD FXF181
4	SLEEVE-SHAFT	2	PPGD FXF289
5	SEAL-OIL, Bearing Housing	2	PPGD 60G3
6	HOUSING-BEARING	2	PPGD FXF368
7	BEARING, Jackshaft	2	PPGD 12W1
8	PLATE-BEARING RETAINING Includes PPGD 40E5	2	PPGD FXF370

Ref. No.	Description	Quantity	Part Number
9	SEAL-OIL, Bearing Retaining Plate	2	PPGD 60G38
10	SCREW, Housing & Retaining Plate	12	PPGD 655EE050
11	GASKET, Housing & Retaining Plate	4	PPGD 25C653
12	KEY, Jackshaft	1	PPGD 35B101
13	COVER-SHAFT EXTENSION	1	PPGD FXF850
14	SCREW, Shaft Extension Cover	3	PPGD 75A68
*	FITTING-LUBRICATION	2	PPGD 40E5
*	JACKSHAFT, (Tapered Shaft) Mayhew	1	PPGD 8FXF371

* Not shown



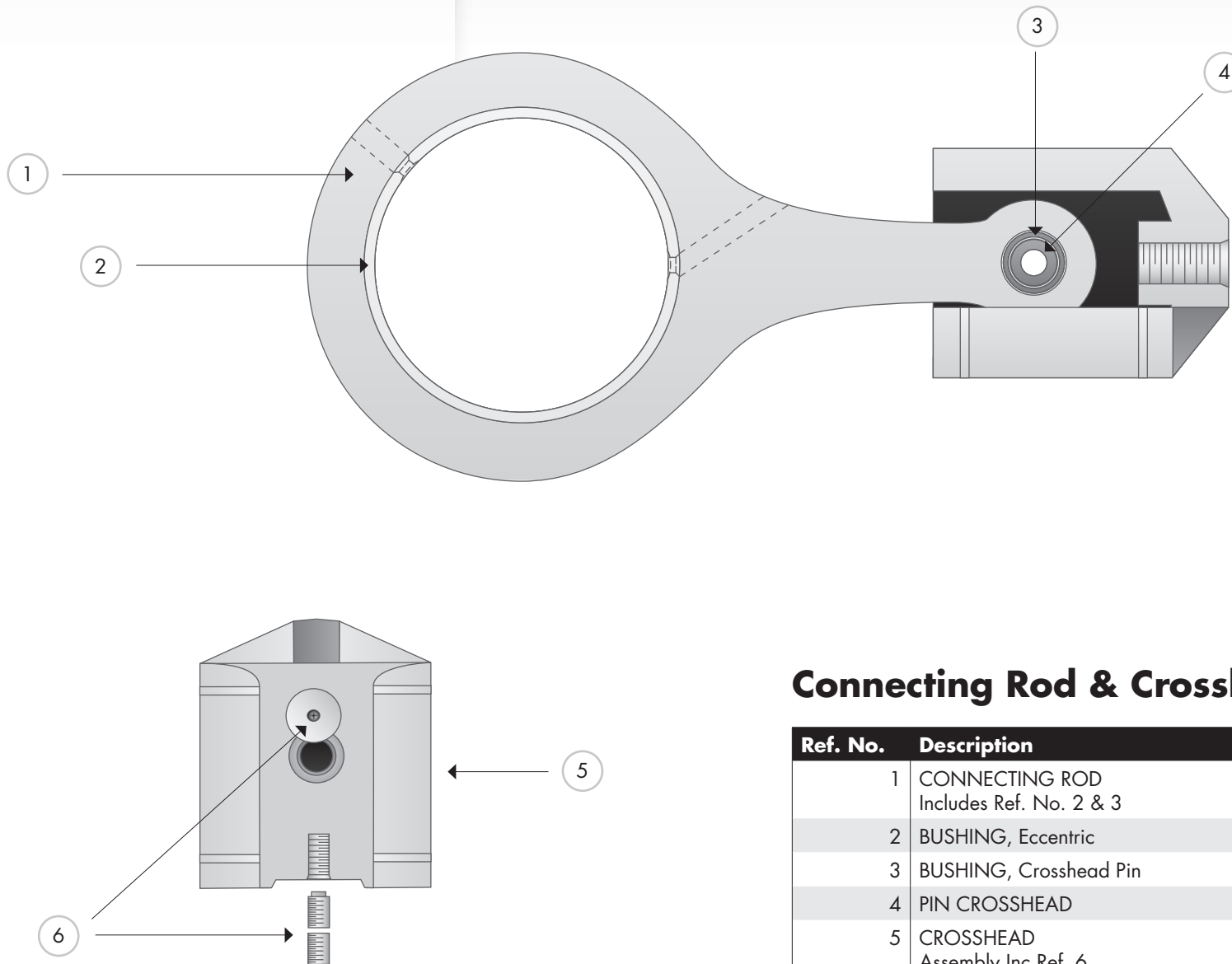
Eccentric Assembly Group

Ref. No.	Description	Quantity	Part Number
1	SHAFT-ECCENTRIC (Includes #2)	1	PPGD 1FXF367
2	KEY	1	PPGD 35C70
3	ECCENTRIC	1	PPGD 1FXF255
4	SLEEVE-SHAFT	2	PPGD 15AUX18
5	SEAL-OIL	2	PPGD 60G220
6	BEARING, Eccentric Shaft	2	PPGD 12C28
7	SHIM, Bearing Cover Plate*	1	PPGD 77G14
8	SCREW, Bearing Cover Plate	12	PPGD 75AA1
9	PLATE-BEARING COVER Includes PPDG 40E5	2	PPGD FXF366
10	GASKET, Bearing Cover Plate**	1	PPGD 25C657
11	FITTING-LUBE	2	PPDG 40E5

* Used opposite PPGD 25C657 Gasket

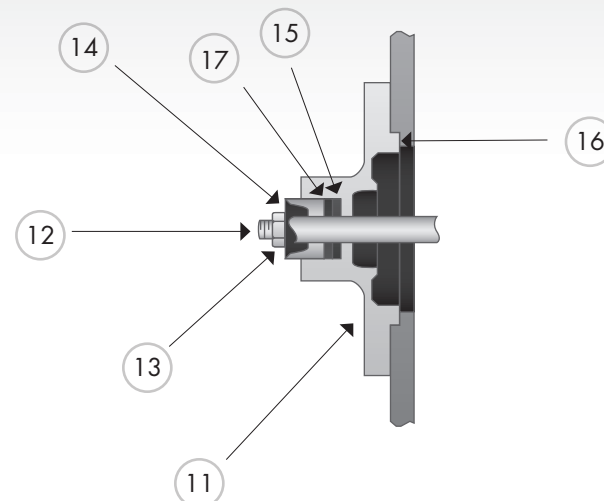
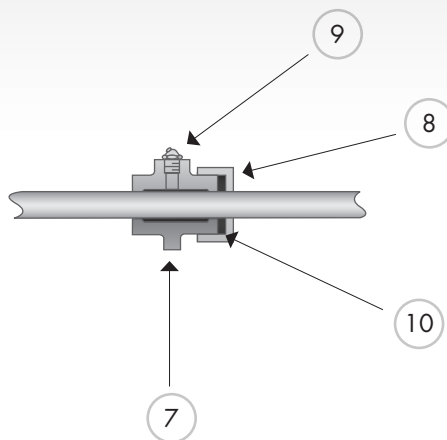
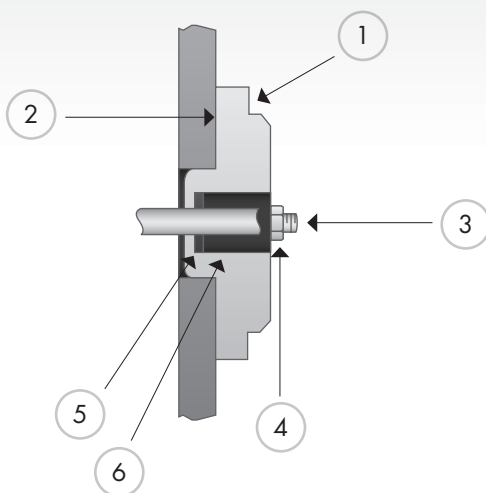
** Used opposite PPGD 77G14 Shims

Please order by part number and description. Reference numbers are for your convenience only.



Connecting Rod & Crosshead

Ref. No.	Description	Quantity	Part Number
1	CONNECTING ROD Includes Ref. No. 2 & 3	2	PPGD 1FXF417
2	BUSHING, Eccentric	2	PPGD 3FXF421
3	BUSHING, Crosshead Pin	2	PPGD AXF229
4	PIN CROSSHEAD	2	PPGD FXF189
5	CROSSHEAD Assembly Inc Ref. 6	2	PPGD 1FXF175X
6	SET SCREW-Assembly	2	PPGD 76J6S



Stuffing Box

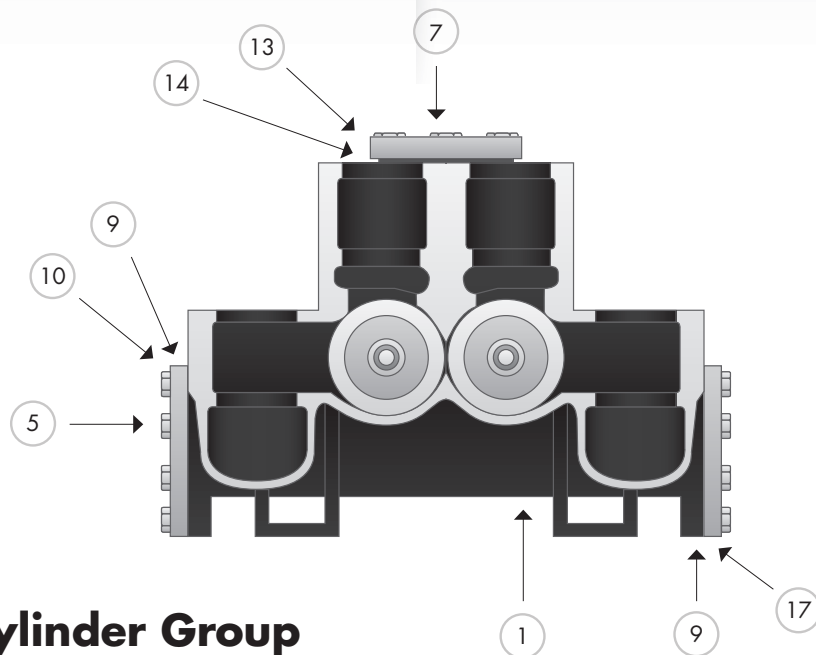
Ref. No.	Description	Quantity	Part Number
1	STUFFING BOX ASSEMBLY Includes Ref. No. 3, 4	2	PPGD 1FF14X
2	GASKET, Stuffing Box	2	PPGD 25C650
3	STUD, Stuffing Box	4	PPGD 79A101C
4	NUT, Stuffing Box Stud	4	PPGD 50AQ7C
5	RING-JUNK	2	PPGD FF317
6	PACKING, Crown type	2	PPGD 60BH14

Stuffing Box Gland

Ref. No.	Description	Quantity	Part Number
	GLAND ASSEMBLY Includes Ref. No. 7, 8, 9, 10	2	PPGD 200FXF008A
7	GLAND	2	PPGD 200FXF008
8	NUT	2	PPGD 200FXG086
9	FITTING-LUBE	2	PPGD 40E10
10	PACKING-RING	2	PPGD 60DD74

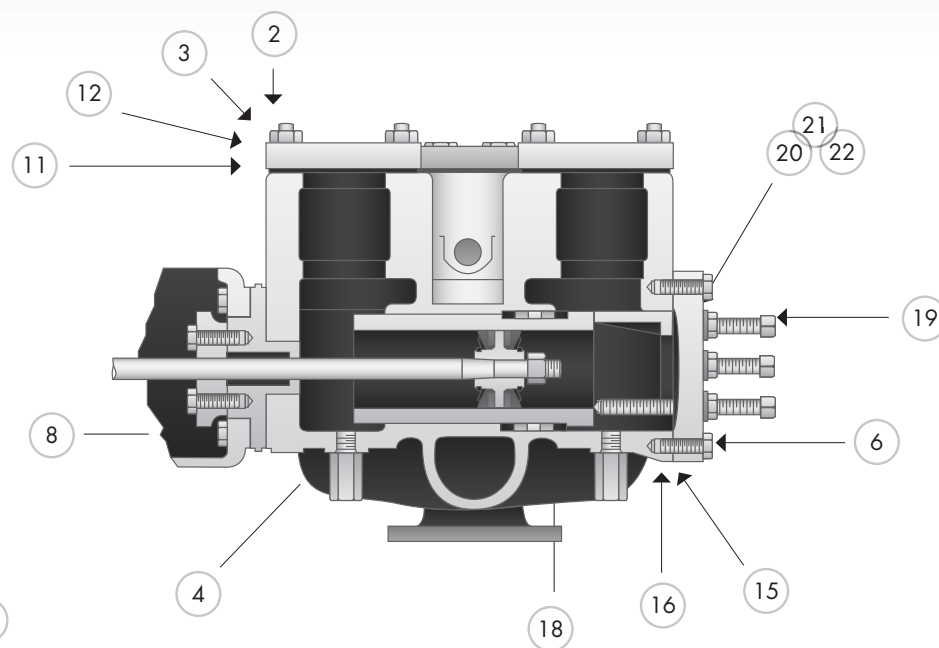
Oil Stop Head

Ref. No.	Description	Quantity	Part Number
11	OIL STOP HEAD ASSEMBLY Includes Ref. No. 12, 13	2	PPGD 2FXF495
12	STUD, Oil stop head	4	PPGD 79A133
13	NUT, Oil Stop Head Stud	4	PPGD 50B3
14	GLAND, Oil Stop Head	2	PPGD AXF238
15	WASHER, Oil Stop Head	2	PPGD AF318
16	GASKET, Oil Stop Head	2	PPGD 25C651
17	PACKING, Oil Stop Head	2	PPGD 60BG23



Fluid Cylinder Group

Ref. No.	Description	Quantity	Part Number
1	FLUID CYLINDER ASSEMBLY Includes Ref. No. 2-8	1	PPGD 6FF29B
2	STUD, Valve Cover	16	PPGD 79L11
3	NUT, Valve Cover Stud	16	PPGD 50B9
4	PLUG, Drain	5	PPGD 64AU5
5	SCREW, Suction & Blank Flange	8	PPGD 655EF05Z
6	SCREW, Cylinder Head	10	PPGD 655EF07Z
7	SCREW, Discharge Flange	8	PPGD 655EF07Z
8	SCREW, Frame To Cylinder	6	PPGD 655EG10Z
9	GASKET, Suction & Blank Flange	2	PPGD 25C501
10	FLANGE, Suction Blank	1	PPGD AXF92
11	GASKET, Valve Cover	8	PPGD 25G27
12	COVER-VALVE	8	PPGD 3FF147



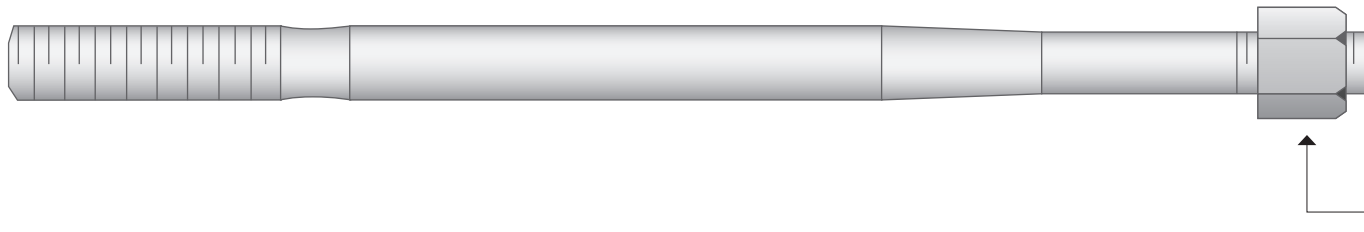
Ref. No.	Description	Quantity	Part Number
13	FLANGE, Discharge	1	PPGD 64CE4
14	GASKET, Discharge Flange	1	PPGD 25C502
15	HEAD-CYLINDER	1	PPGD 3FF41
16	GASKET, Cylinder Head	2	PPGD 25G29
17	FLANGE, Suction	1	PPGD 64DC5
18	PACKING, Liner	2	PPGD 200FFF519
19	SET SCREW, Liner Clamp	4	PPGD 76N14
20	PACKING, Liner Clamp Set Screw	4	PPGD 60BQ1
21	WASHER, Liner Clamp Set Screw	4	PPGD 95F7
22	NUT, Liner Clamp Set Screw	4	PPGD 50B7C
*	LINER	2	See page 11



Cylinder Liners

Two (2) required per pump

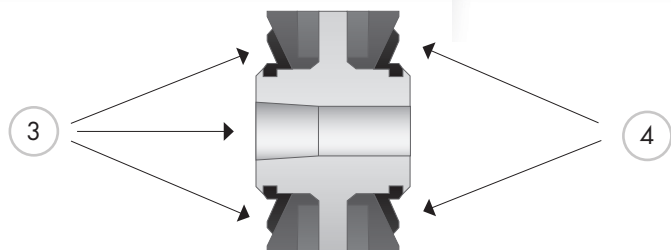
Size	Quantity	STANDARD Hardened Steel Part Number	Chrome Plated Part Number	Stainless Steel Part Number	Bronze Part Number
4½"	2	PPGD 200FFF456	PPGD 200FFF456C	PPAM A405001045	PPAM A406001045
4"	2	PPGD 200FFF45640	PPGD 200FFF45640C	PPAM A405002004	PPAM A406002004
3½"	2	PPGD 200FFF45635	PPGD 200FFF45635C	PPAM A405003035	PPAM A406003035
3"	2	PPGD 200FFF45630	PPGD 200FFF45630C	PPAM A405004003	PPAM A406004003
2½"	2	PPGD 200FFF45625	PPGD 200FFF45625C	PPAM A405005025	PPAM A406005025



Piston Rod & Lock Nut

GD-1 Taper

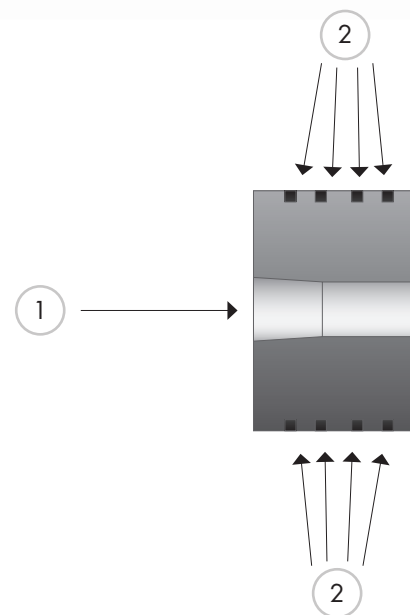
Ref. No.	Description	Quantity	STANDARD Hardened Steel Part Number	Chrome Plated Part Number	Stainless Steel Part Number	Bronze Part Number
	PISTON, ROD Includes Ref. No. 1, 2	2	PPGD 21FXF183	PPGD 21FXF183C	PPGD 7FXF183	PPGD 8FXF183
1	LOCK NUT	2	PPGD 59AW9	PPGD 59AW9	PPGD 59AW9	PPGD 59AW9



Steel Insert Type Piston GD-1 Taper

Standard for slush, grout and cement service.

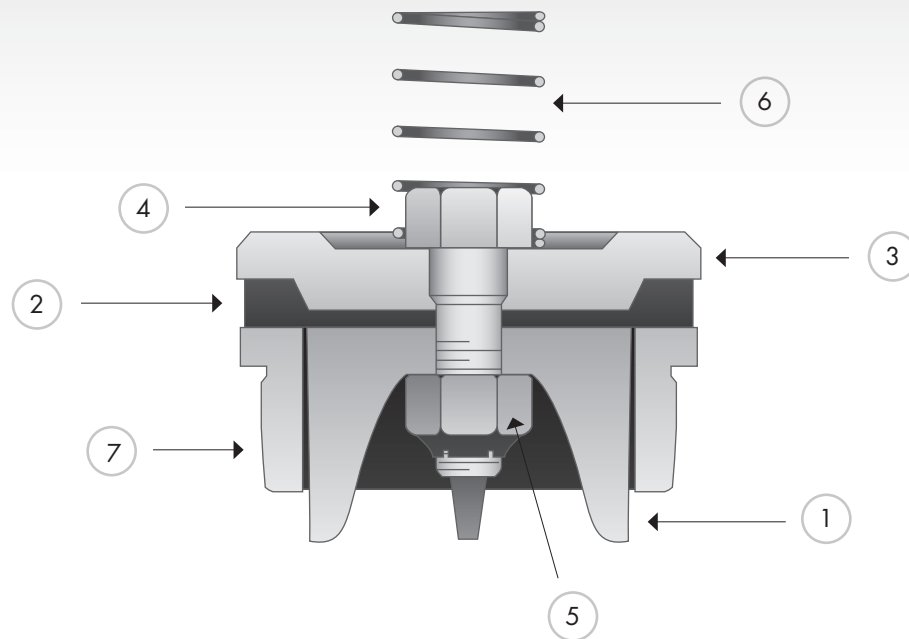
Ref. No.	Description	Quantity	Part Number
3	4½" PISTON ASSEMBLY Includes 4½" Insert Group	2	PPGD 207TBA045A
4	4½" INSERT GROUP Rubber, Retainer Plate & Rings	2	PPGD TBA76000
3	4" PISTON ASSEMBLY Includes 4" Insert Group	2	PPGD 205TBA045A
4	4" INSERT GROUP Rubber, Retainer Plate & Rings	2	PPGD TBA75998
3	3½" PISTON ASSEMBLY Includes 3½" Insert Group	2	PPGD 203TBA045A
4	3½" INSERT GROUP Rubber, Retainer Plate & Rings	2	PPGD TBA75996
3	3" PISTON ASSEMBLY Includes 3" Insert Group	2	PPGD 201TBA045A
4	3" INSERT GROUP Rubber, Retainer Plate & Rings	2	PPGD TBA75994
3	2½" PISTON ASSEMBLY Includes 2½" Insert Group	2	PPGD 45D278
4	2½" INSERT GROUP Rubber, Retainer Plate & Rings	2	PPGD 45E41



Solid Iron Type Piston GD-1 Taper

With cast iron rings. Standard for oil service.

Ref. No.	Description	Quantity	Part Number
1	4½" PISTON	2	PPGD FG350
2	4½" RINGS-PISTON	8	PPGD 65A1
1	4" PISTON	2	PPGD AXG350
2	4" RINGS-PISTON	8	PPGD 65A33
1	3½" PISTON	2	PPGD 1AXG350
2	3½" RINGS-PISTON	8	PPGD 65A9
1	3" PISTON	2	PPGD 2AXG350
2	3" RINGS-PISTON	8	PPGD 65A14
1	2½" PISTON	2	PPGD 1FG350
2	2½" RINGS-PISTON	8	PPGD 65A44



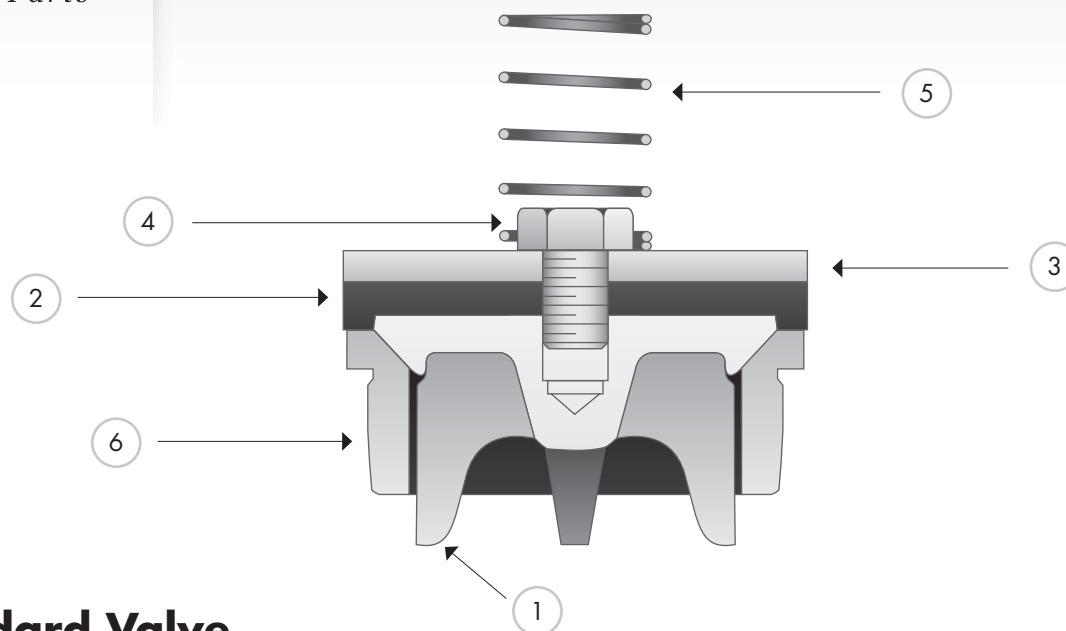
Wing Guided Gravel Valve

Hardened steel with rubber insert (Slush, grout & cement service)

Ref. No.	Description	Quantity	STANDARD	Part Number
			Hardened Steel, Rubber Insert	Hardened Steel, Polyurethane Insert
	FLUID VALVE ASSEMBLY Includes Ref. No. 1, 2, 3, 4, 5	8	PPGD 200FFF482A	PPGD 200FFF482P
1	VALVE-FLUID	8	PPGD 200FFF482	PPGD 200FFF482
2	INSERT	8	PPGD 200FFF106	PPGD 200FFF106P
3	WASHER-VALVE	8	PPGD 200FFF279	PPGD 200FFF279
4	SCREW	8	PPGD 200FFF655	PPGD 200FFF655
5	LOCKNUT	8	PPGD 50AF7	PPGD 50AF7
6	SPRING (Brass)	8	PPGD 78D22	PPGD 78D22
7	SEAT-VALVE	8	PPGD 202FFF039	PPGD 202FFF039
*	SPRING (Steel)	8	PPGD 78A171ST	PPGD 78A171ST
*	SPRING (Stainless Steel)	8	PPGD 78A171SS	PPGD 78A171SS

* Optional Springs

Please order by part number and description. Reference numbers are for your convenience only.

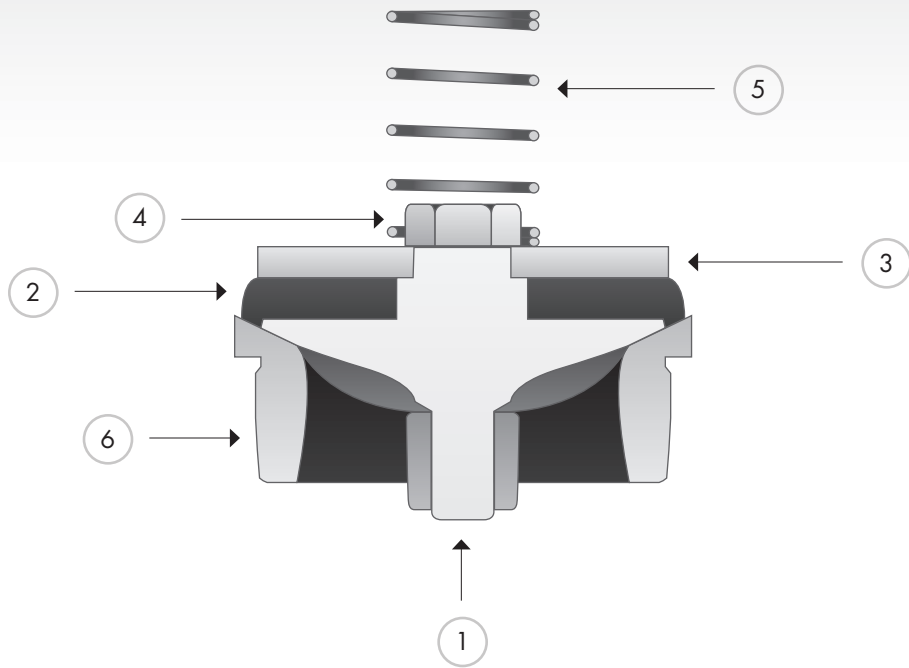


Wing Guided Standard Valve

Slush, grout, cement & water service

Ref. No.	Description	Quantity	Part Number	Part Number	Part Number
			Hardened Steel, Rubber Insert	Hardened Steel, Polyurethane Insert	Bronze, Rubber Insert
	FLUID VALVE ASSEMBLY Includes Ref. No. 1, 2, 3, 4	8	PPGD FF928	PPGD FF928P	PPGD 8FF206A
1	VALVE-FLUID	8	PPGD 18FF206	PPGD 18FF206	PPGD 8FF206
2	INSERT	8	PPGD 1FF452	PPGD 1FF452P	PPGD 1FF452
3	TOP PLATE	8	PPGD 95D51	PPGD 95D51	PPGD 95G11
4	SCREW	8	PPGD 5FF156	PPGD 5FF156	PPGD 7FF156
5	SPRING (Brass)	8	PPGD 78D22	PPGD 78D22	PPGD 78D22
6	SEAT-VALVE	8	PPGD 11FF39	PPGD 11FF39	PPGD 11FF39
*	SPRING (Steel)	8	PPGD 78A171ST	PPGD 78A171ST	PPGD 78A171ST
*	SPRING (Stainless Steel)	8	PPGD 78A171SS	PPGD 78A171SS	PPGD 78A171SS

* Optional Springs

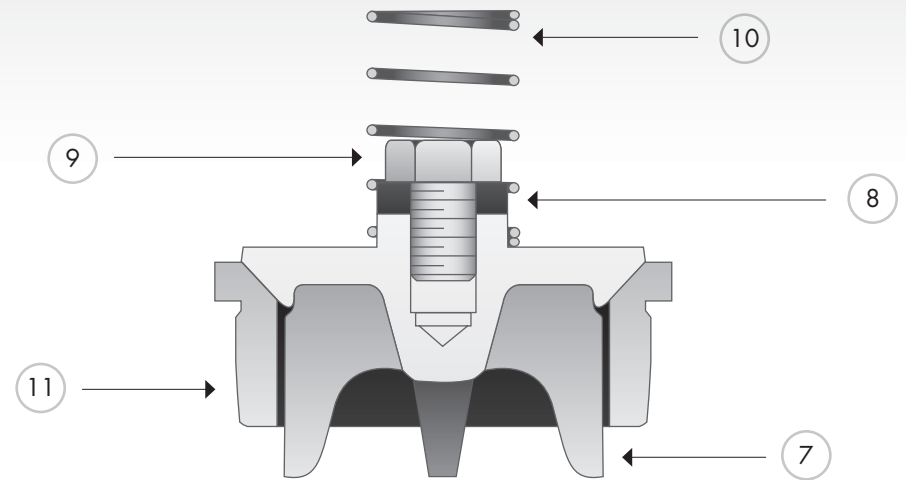


Center Guided Valve

Hardened steel with rubber insert – Slush service

Ref. No.	Description	Quantity	Model Part Number
	FLUID VALVE ASSEMBLY Includes Ref. No. 1, 2, 3, 4	8	PPGD 1FF908
1	VALVE-FLUID	8	PPGD 2FF482
2	INSERT (Rubber)	8	PPGD 5FF452
3	WASHER	8	PPGD 1FF279
4	NUT	8	PPGD 50G8
5	SPRING (Brass)	8	PPGD 78D22
6	SEAT-VALVE	8	PPGD 1FF451
*	SPRING (Steel)	8	PPGD 78A171ST
*	SPRING (Stainless Steel)	8	PPGD 78A171SS

* Optional Springs



Wing Guided Valve

Hardened steel without insert – Oil or general service

Ref. No.	Description	Quantity	Part Number
	FLUID VALVE ASSEMBLY Includes Ref. No. 7, 8, 9	8	PPGD 18FF206A
7	VALVE-FLUID	8	PPGD 18FF206
8	WASHER-VALVE	8	PPGD 95D136
9	SCREW	8	PPGD 5FF156
10	SPRING	8	PPGD 78A134
11	SEAT-VALVE	8	PPGD 11FF39

Valve Seat Puller Gravel Type (Optional equipment)

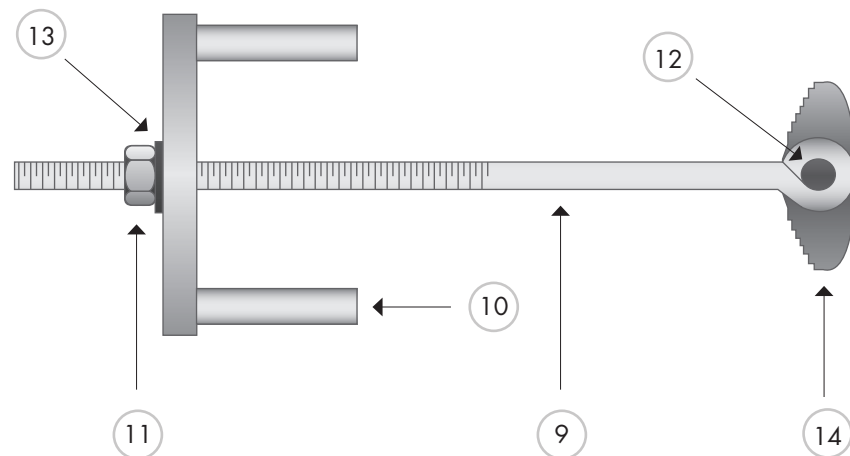
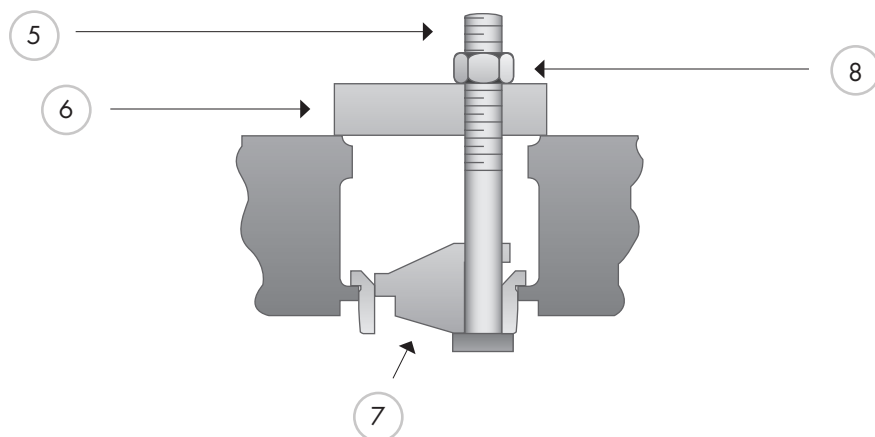
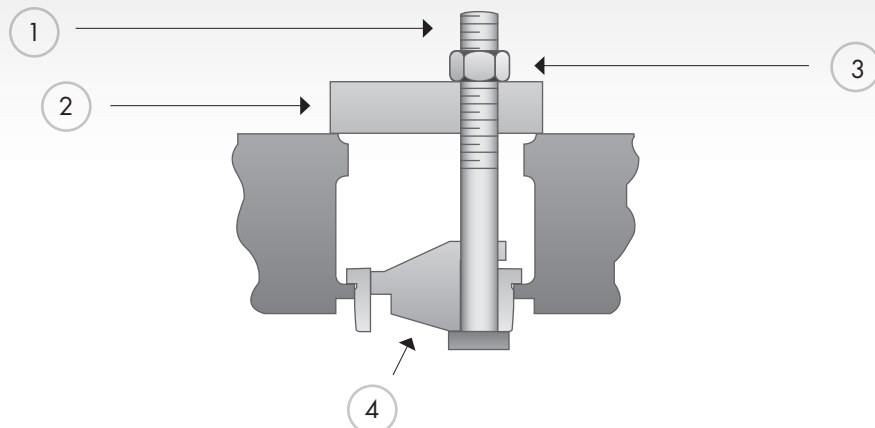
Ref. No.	Description	Quantity	Part Number
	PULLER ASSEMBLY, VALVE SEAT Includes 1, 2, 3, 4	1	PPGD 201FFF219A
1	BOLT-PULLER	1	PPGD 2AUX235X
2	PLATE-PULLER	1	PPGD 2AUX292
3	NUT-HEX	1	PPGD 50C11
4	PULLER, Valve Seat	1	PPGD 202FFF219

Valve Seat Puller Standard Type (Optional equipment)

Ref. No.	Description	Quantity	Part Number
	PULLER ASSEMBLY Includes Ref. No. 5, 6, 7, 8	1	PPGD 201FFF219A
5	BOLT-PULLER	1	PPGD 2AUX235X
6	PLATE-PULLER	1	PPGD 2AUX292
7	PULLER	1	PPGD 201FFF209
8	NUT	1	PPGD 50C11

Liner Puller (Optional equipment)

Ref. No.	Description	Quantity	Part Number
	PULLER ASSEMBLY 3-5" Bore Includes Ref. No. 9, 10, 11, 12, 13, 14		PPGD FF284
9	BOLT-PULLER	1	PPGD FG344
10	TOOL, Liner Puller	1	PPGD 1FG346
11	NUT	1	PPGD 50B8
12	PIN	1	PPGD 62A93
13	WASHER	1	PPGD 95A8
14	PULLER	1	PPGD FF345



Index	Page	How To Order Replacement Parts	How To Return A Part
Connecting Rod	8	All orders for parts should be placed with the nearest sales and service office.	All claims must be made within five days after you receive your products. If your order was filled correctly, shipping and handling charges will apply and must be prepaid.
Crosshead	8		
Cylinder Liners	11	To determine the right and left hand side of the pump, stand at the power end and face the fluid end of the pump.	All parts returned for credit should be handled in the same manner as that for duplication or inspection.
Details	2		
Eccentric Assembly Group	7	Specify pump model, size, and serial number (see name plate on the pump). Serial number is also stamped on the cylinder end of the frame.	Duplication And Inspection
Fluid Cylinder Group	10		
Frame Assembly Group	5	Please order by the part number and specify exactly the number of parts required.	If it is necessary to return a part to the factory for duplication or inspection, please take the following steps.
Jackshaft Assembly Group	6		
Liner Puller	16		
Oil Stop Head	9		
Performance	3		
Piston Rod	11		
Pistons	12		
Specifications	2		
Stuffing Box	9		
Stuffing Box Gland	9		
Valve Seat Pullers	16		
Valves.....	13,14,15		

AMAmerican
Mfg Company
Quality Mud Pumps and Parts

ex•cel•lent \ˈek-s(ə-)lənt\adj.

1: SUPERIOR 2: of the highest or finest quality; exceptionally good; superb.

**Where hard work is still treasured
and quality is a matter of pride.**

AXF SERIES DUPLEX POWER PUMPS WARRANTY

American Manufacturing (the "Company") warrants its products only as follows:

GENERAL PROVISIONS AND LIMITATIONS

The Company warrants to each original retail purchaser ("purchaser") of its new products from the Company or its authorized distributor that such products are, at the time of delivery to the Purchaser, made with good material and workmanship, provided that no warranty is made with respect to:

1. Any product which has been repaired or altered in such a way, in the Company's judgment, as to affect the product adversely.
2. Any product which has, in the Company's judgment, been subject to negligence, accident, improper storage, or improper installation or application.
3. Any product which has not been operated or maintained in accordance with normal practice and with the recommendations of the Company.
4. Components or accessories manufactured, warranted and serviced by others.
5. Any reconditioned or prior owned product.

Claims for items described in (4) above should be submitted directly to the manufacturer.

The Company's obligation under this warranty is limited to repairing or, at its option, replacing, during normal business hours any part which in its judgment proved not to be as warranted within the applicable Warranty Period. During the first 90 days after start-up, not exceed 120 days after delivery, a new part or a repaired part along with the

labor for installation of such new or repaired part will be provided. Such parts and labor will be provided without charge to the user during normal working hours at the Company's or authorized distributor's service facility. All costs of transportation of product or parts claimed not to be as warranted and of repaired or replacement parts to or from such service facility shall be borne by the Purchaser. The Company may require the return of any product or part claimed not to be as warranted to one of its facilities as designated by Company, transportation prepaid by Purchaser, to establish a claim under this warranty.

Replacement parts provided under the terms of this warranty are warranted for the remainder of the Warranty Period of the product upon which installed to the same extent as if such parts were original components thereof.

WARRANTY PERIOD

Except for the products or components listed below, the Warranty Period for all products is 1,250 hours of operation or three months after start-up, not to exceed 120 days after delivery to Purchaser, whichever occurs first. The exceptions are as follows:

Power end and fluid end are warranted for 12 months from date of start-up or 18 months from date of delivery to the purchaser, whichever occurs first.

Expendable fluid end parts, including valves, valve parts, liners and pistons, are not covered by this warranty due to variable abrasive nature of material pumped.

DISCLAIMER

THE COMPANY MAKES NO OTHER WARRANTY OF ANY KIND WHATSOEVER EXPRESSED OR IMPLIED AND ALL WARRANTIES OF MERCHANTABILITY AND FITNESS FOR A PARTICULAR PURPOSE ARE HEREBY DISCLAIMED BY THE COMPANY. THE COMPANY SHALL IN NO CASE BE SUBJECT TO ANY OTHER OBLIGATIONS OR LIABILITIES WHATSOEVER WITH RESPECT TO PRODUCTS OR SERVICES MANUFACTURED OR FURNISHED BY IT OR ANY ACTS OR OMISSIONS RELATING THERETO. THE REMEDY PROVIDED UNDER THIS WARRANTY SHALL BE THE SOLE, EXCLUSIVE AND ONLY REMEDY AVAILABLE TO PURCHASER. UNDER NO CIRCUMSTANCES SHALL THE COMPANY BE LIABLE FOR ANY SPECIAL, INDIRECT, INCIDENTAL OR CONSEQUENTIAL DAMAGES, EXPENSES, LOSSES OR DELAYS HOWSOEVER CAUSED.

No statement, representation, agreement or understanding, oral or written, made by any agent, distributor, representative or employee of the Company which is not contained in this Warranty will be binding upon the Company unless made in writing and executed by an officer of the Company.

This warranty shall not be effective as to any claim which is not presented within 30 days after the date upon which the product is claimed not have been as warranted. Any action for breach of this warranty must be commenced within one year after the date upon which the cause of action occurred.

Any adjustment made pursuant to this warranty shall not be construed as an admission by the Company that and product was not as warranted.



American Mfg Company is a quality manufacturer of pumps and replacement parts for a wide variety of mud pumps, centrifugal pumps, drilling rigs, and swivels found in the world market today.

American Mfg Company's plant is located in America's Heartland. Our highly trained staff uses state-of-the-art equipment and proven quality control methods to produce the finest pumps and replacement parts found on the market today.

Our pumps and replacement parts are used in many different industries including the mining, water well, oilfield, geothermal and horizontal directional drilling industries.

Every part we make is manufactured to standards equal to or exceeding those of the O.E.M.

Service parts are available through American Mfg Company's worldwide network of distributors or from the original supplier for the equipment that the pump is a component of.

**AM American
Mfg Company**
Quality Mud Pumps and Parts

Factory/Sales Office

P.O. Box 640
736 19th Avenue NE
St. Joseph, Minnesota 56374

(888) 299-3412 ~ Toll Free
(320) 363-7273 ~ Phone
(320) 363-7274 ~ Fax

info@american-manufacturing.com
www.american-manufacturing.com



7k-0266

