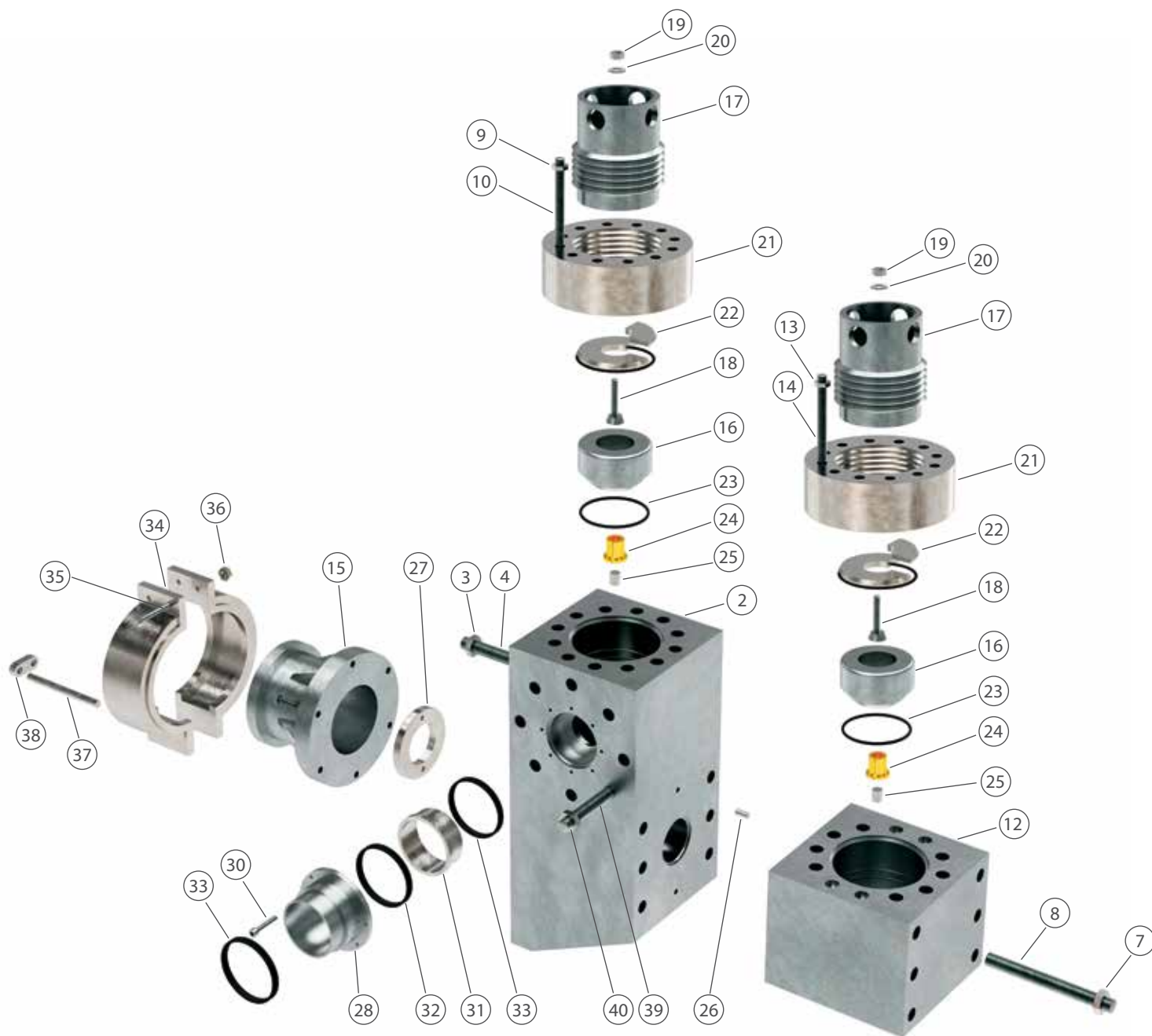


National 12-P-160 Module Exploded View



MUD PUMP EXPENDABLES

ITEM	PART NUMBER	DESCRIPTION	QTY PER PUMP
1	PPNO 1292240	MODULE, DISCHARGE STUDDER (INCL ITEM 2-10)	3
2	PPNO 1292241	MODULE, DISCHARGE UNSTUDDER 12-P-160	3
3	PPNO 6300220	NUT	30
4	PPNO 2408029	STUD, POWER FRAME	30
5	PPNO 6300180	NUT	18
6	PPNO 2408028	STUD, LINER BUSHING	18
7	PPNO 6300281	NUT	18
8	PPNO 2408033	STUD, DISCHARGE MODULE TO SUCTION MODULE	18
9	PPNO 6300240	NUT	36
10	PPNO 2408027	STUD, THREADED RING	36
11	PPNO 1292243	SUCTION MODULE, STUDDER (INCL ITEM 12, 13, 14)	3
12	PPNO 1292244	SUCTION MODULE, UNSTUDDER, 12-P-160	3
13	PPNO 6300240	NUT	36
14	PPNO 2408027	STUD, THREADED RING	36
15	PPNO 1292165	BUSHING, LINER 12-P-160	3
16	PPNO 1292174	RETAINER, VALVE COVER SEAL, 12-P-160	6
17	PPNO 1292172	COVER TAPER LOCK, 12-P-160	6
18	PPNO 1292178	SCREW, WEDGE 12-P-160	6
19	PPNO 6300182	NUT	6
20	PPNO 1292171	WASHER, WEDGE ADJUSTING SCREW 12-P-160	6
21	PPNO 1292176	RING, THREADED 12-P-160	6
22	PPNO G-1292268	WEDGE, LOCKING 12-P-160	6
23	PPNO 1540127	PACKING, VALVE COVER PLATE 12-P-160	6
24	PPNO 1292140	RETAINER PLATE, 7P-14P	6
25	PPNO 1292141	INSERT, VALVE GUIDE 7P-14P	6
26	PPNO 6511416	PIN, DOWEL 7P-14P	6
27	PPNO 1292266	WEAR PLATE, 12-P-160	3
28	PPNO 1292252	CONNECTOR, DISCHARGE 12-P-160	2
29	PPNO 700030711	SCREW	16
30	PPGD 95W2	LOCK WASHER	16
31	PPNO 1292253	ADAPTER, 12-P-160	4
32	PPNO 2410031-433	PACKING, RECTANGULAR 12-P-160	2
33	PPNO 2410031-437	PACKING, RECTANGULAR 12-P-160	6
34	PPNO 1292166	LINER CLAMP COMPLETE 12-P-160	3
35	PPNO 7000491-10	BOLT, HEX HEAD 12-P-160	6
36	PPNO 6309140	NUT	6
37	PPNO 1292169	PIN, 12-P-160	6
38	PPNO 1292168	CONNECTOR, LINER CLAMP	6
39	PPNO 2408015	STUD, TAPER LOCK 12-P-160	16
40	PPNO 6300240	NUT	16

American Mfg Company is in no way affiliated with the listed companies. References to companies names are for identification purposes only and are not Trade Marks or Trade Names used by or affiliated with American Mfg Company

National 12-P-160

	LINERS		PISTONS		REPLACEMENT RUBBERS
SIZE	BI-METALLIC	CERAMIC-ZIRC	RUBBER-SUPREME	URETHANE-GREEN DUO	RUBBER-SUPREME
5"	PPNO 05466500	PPNO 07466500	PPNO 012180253	PPNO 1502056	PPNO 015180185
5.1/2"	PPNO 05466550	PPNO 07466550	PPNO 012180337	PPNO 1502058	PPNO 015180227
6.0"	PPNO 05466600	PPNO 07466600	PPNO 012180394	PPNO 1502060	PPNO 015180268
6.1/2"	PPNO 05466650	PPNO 07466650	PPNO 012180535	PPNO 1502062	PPNO 015180300
5"-6" LINERS USE PPNO 792326_ GASKET, 6.1/2" LINER USES PPNO 07923284					
VALVES, SEATS, INSERTS AND SPRINGS				GASKETS	
	WEBBED-SUPREME STYLE	FULL OPEN STYLE	FULL OPEN HP STYLE		PART NUMBER
VALVE	PPNO 060155041	PPNO 9700250	PPNO 9700354	VALVE COVER GASKET CYL HEAD GASKET EXTENSION ROD SEAL WEAR PLATE GASKET	PPNO 1540138
SEAT	PPNO 061102505	PPNO 9702539	PPNO 9702539		N/A
INSERT-URETHANE	PPNO 062400338	PPNO 9705228	PPNO PFO71		PPNO 1292182
SPRING	PPNO 055413421	PPNO 8201684	PPNO 8201684		PPNO 1292257
PISTON RODS, EXTENSION RODS, CROSSHEAD					
CLAMP-TYPE PISTON ROD		ROD CLAMP	CLAMP TYPE EXTENSION ROD		CROSSHEAD
PPNO 1292147		PPNO 1292085	PPNO 1292083		PPNO 1292090 (L) PPNO 1292015 (RT&CTR)
DISCHARGE MODULE: PPNO 1292240			SUCTION MODULE: PPNO 1292243		

American Mfg Company is in no way affiliated with the listed companies. References to companies names are for identification purposes only and are not Trade Marks or Trade Names used by or affiliated with American Mfg Company